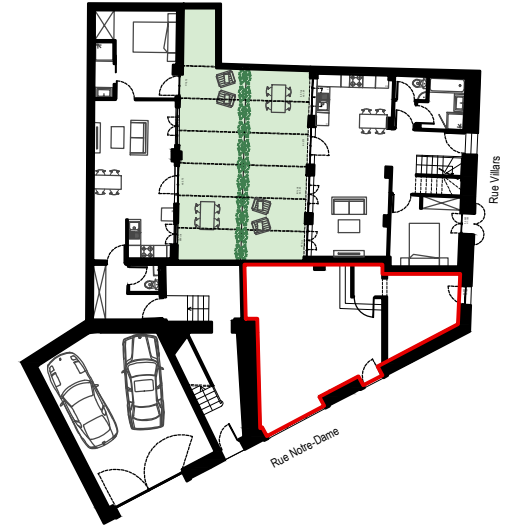
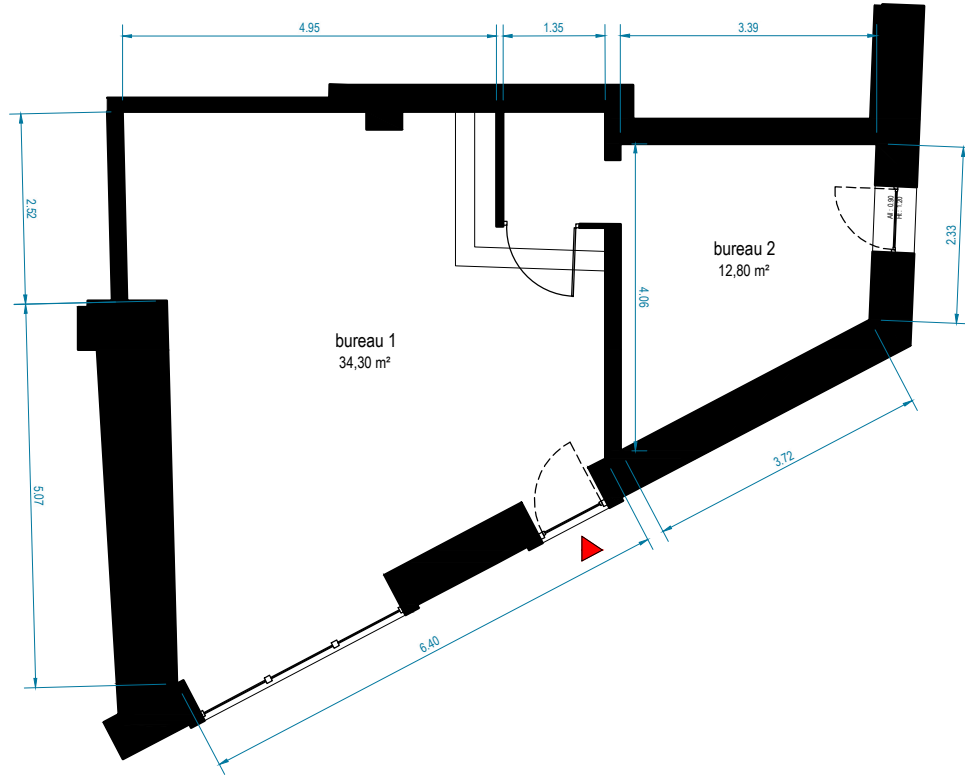
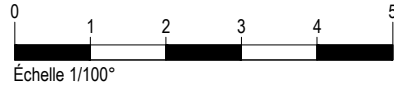




NORD



Rez de chaussée

Lot n°1 - BUREAUX - RdC

Bureau 1	_____	34.30 m ²
Bureau 2	_____	12.90 m ²



6 3 Rue Notre Dame - N I M E S

Maître d'ouvrage : LB IMMO

TOTAL SURFACE (Loi Carrez)

47.20 m²